

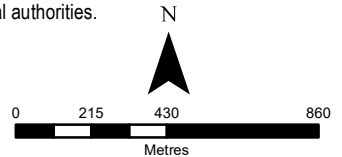
PROJECT		MUNICIPALITY OF BAYHAM	
TITLE		COMMERCIAL & INDUSTRIAL LANDS REVIEW	
	PROJECT NO.	3404	SCALE AS SHOWN
	DESIGN	JG	2020-06-11
	CHECK		
	REVIEW		
		REV. 0.0	
		No. 1	

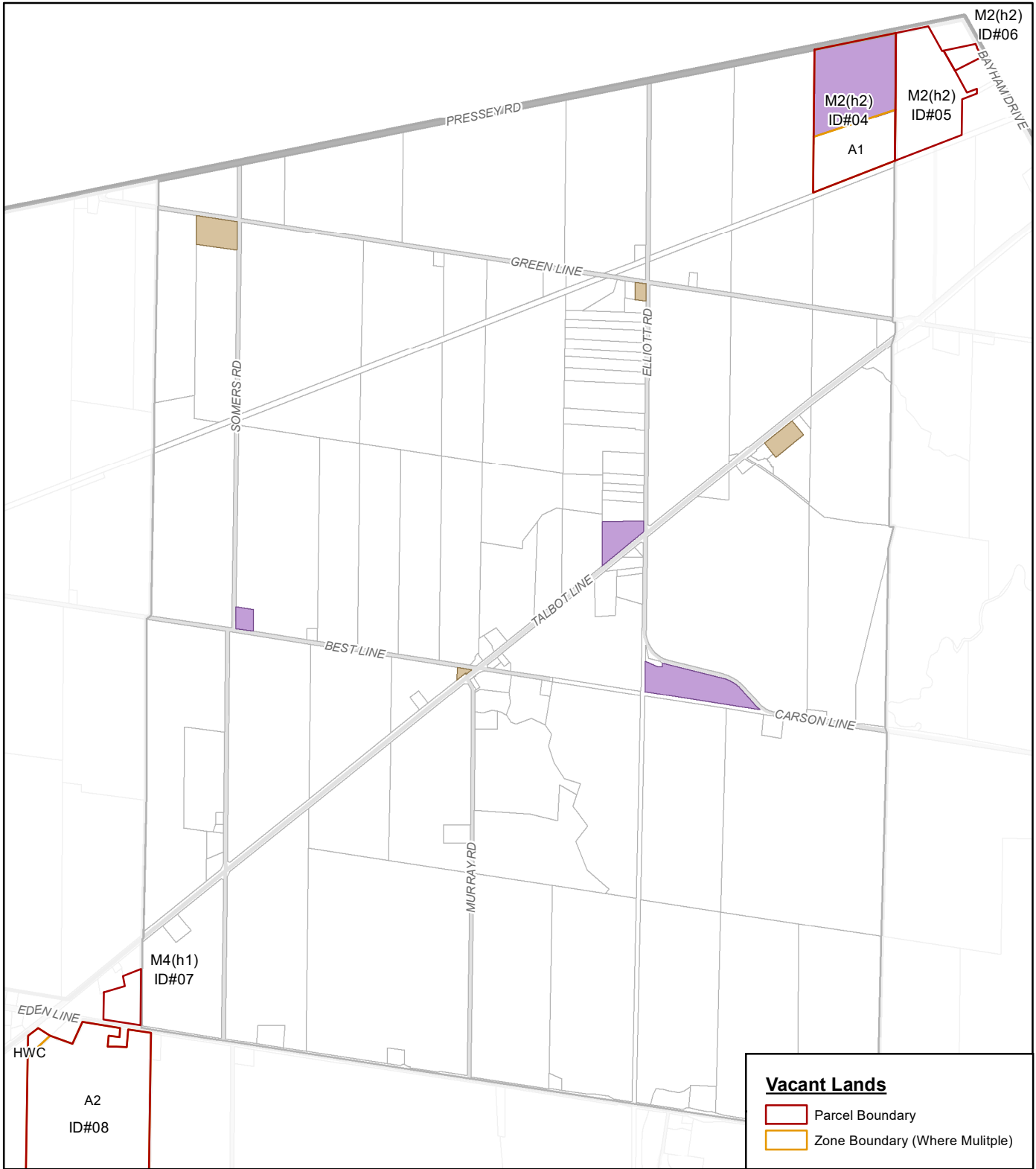
LEGEND

Zone Categories

	Commercial
	Hamlet Commercial
	Highway Commercial
	Industrial
	Rural Commercial

NOTE: The Municipality of Bayham Commercial and Industrial Lands Review has been prepared for reference and informational purposes only. Development requirements are determined through pre-consultation with Municipal planning staff and are subject to approvals by the appropriate approval authorities.





Vacant Lands

- Parcel Boundary
- Zone Boundary (Where Multiple)

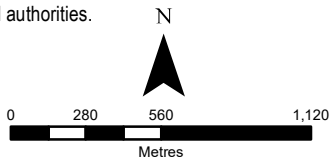
PROJECT			
MUNICIPALITY OF BAYHAM			
TITLE			
COMMERCIAL & INDUSTRIAL LANDS REVIEW			
[BI]	PROJECT NO. 3404		SCALE AS SHOWN
	DESIGN		REV. 0.0
	GIS	JG	2020-06-11
	No. 2		
	CHECK		
REVIEW			

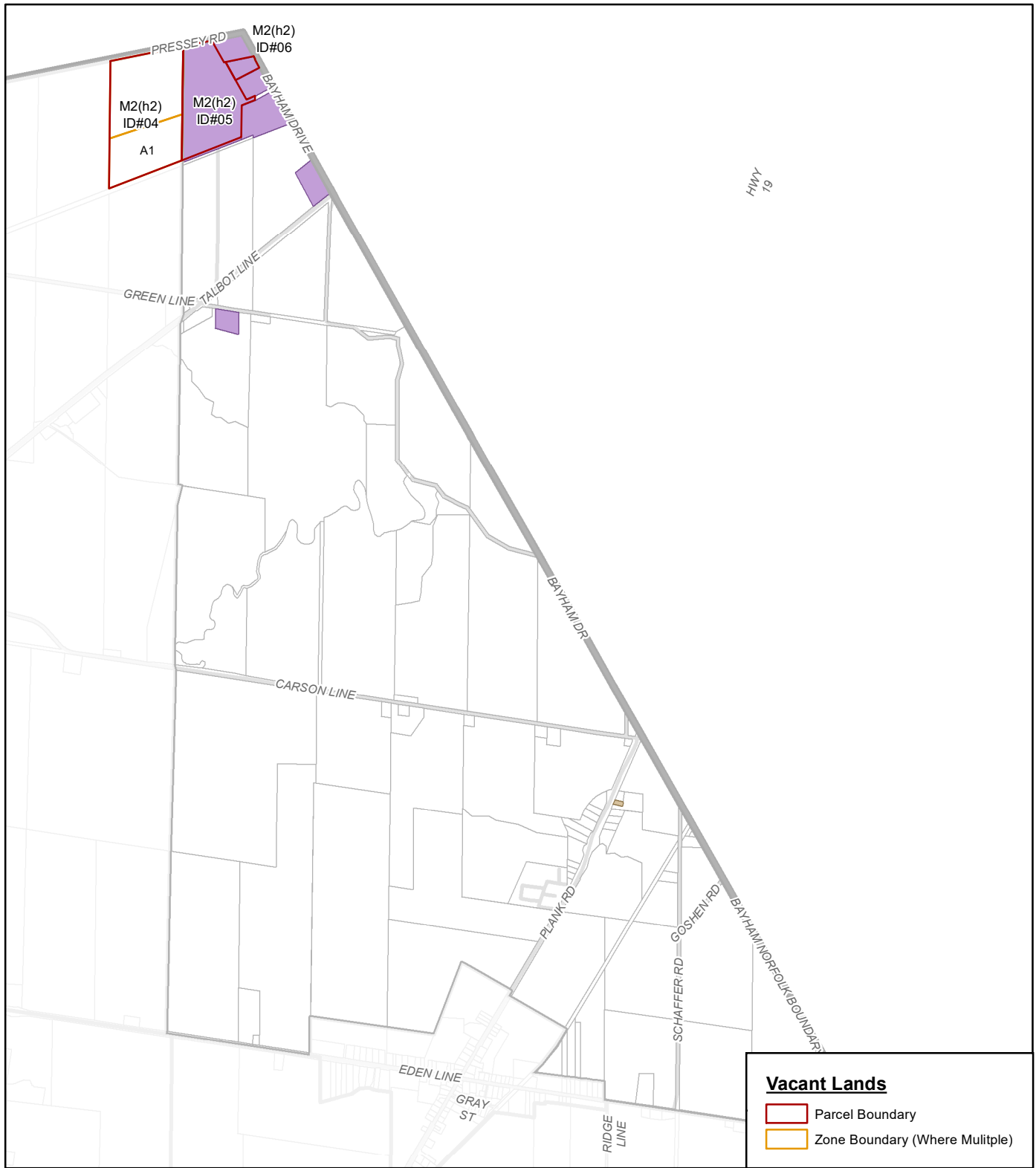
LEGEND

Zone Categories

- Commercial
- Hamlet Commercial
- Highway Commercial
- Industrial
- Rural Commercial

NOTE: The Municipality of Bayham Commercial and Industrial Lands Review has been prepared for reference and informational purposes only. Development requirements are determined through pre-consultation with Municipal planning staff and are subject to approvals by the appropriate approval authorities.

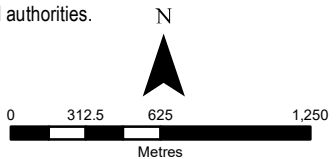


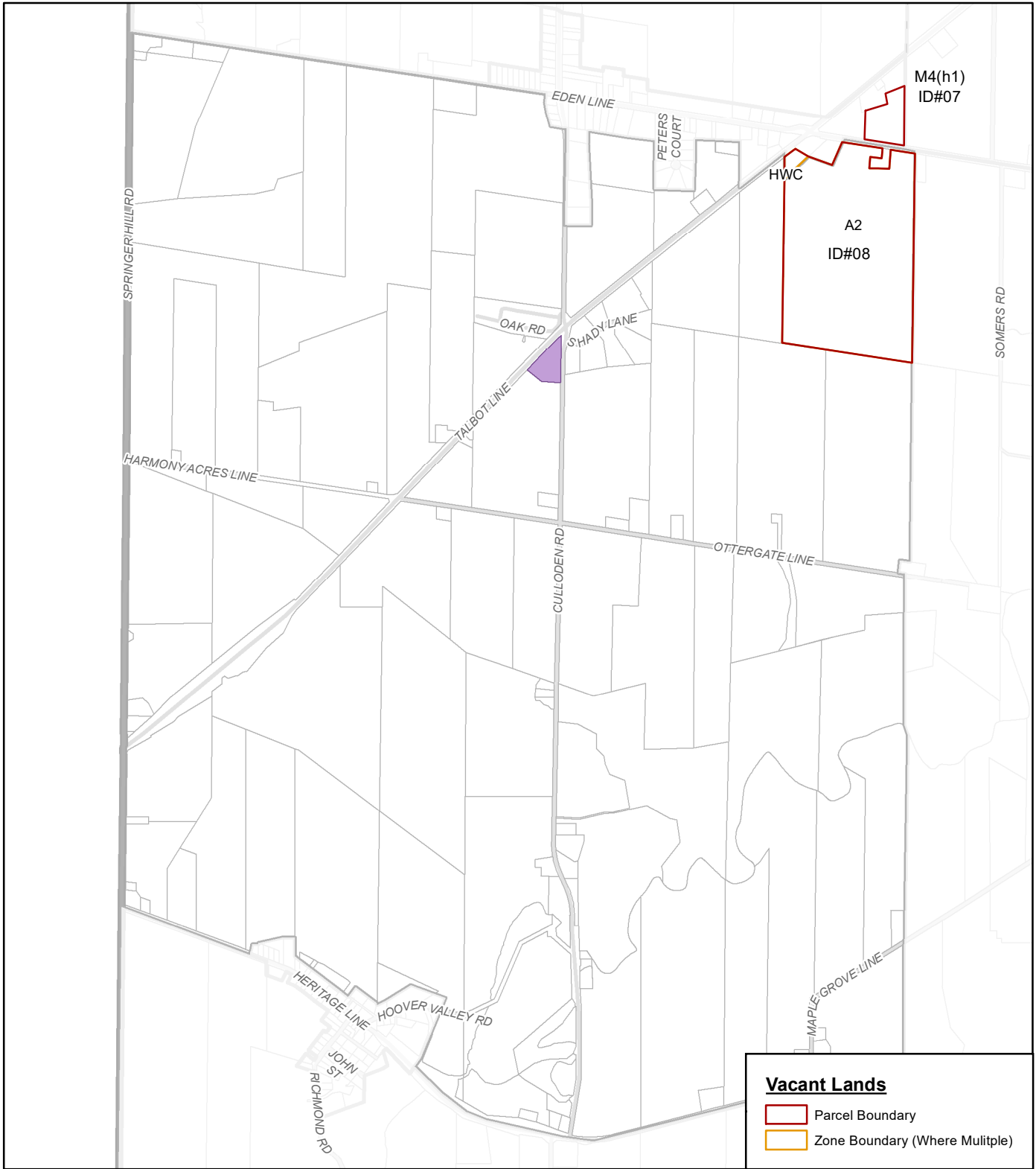


PROJECT		MUNICIPALITY OF BAYHAM	
TITLE		COMMERCIAL & INDUSTRIAL LANDS REVIEW	
	PROJECT NO.	3404	SCALE AS SHOWN
	DESIGN	JG	2020-06-11
	CHECK		
	REVIEW		
		No. 3	

- LEGEND**
- Zone Categories**
- Commercial
 - Hamlet Commercial
 - Highway Commercial
 - Industrial
 - Rural Commercial

NOTE: The Municipality of Bayham Commercial and Industrial Lands Review has been prepared for reference and informational purposes only. Development requirements are determined through pre-consultation with Municipal planning staff and are subject to approvals by the appropriate approval authorities.

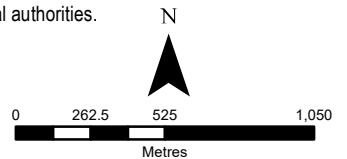


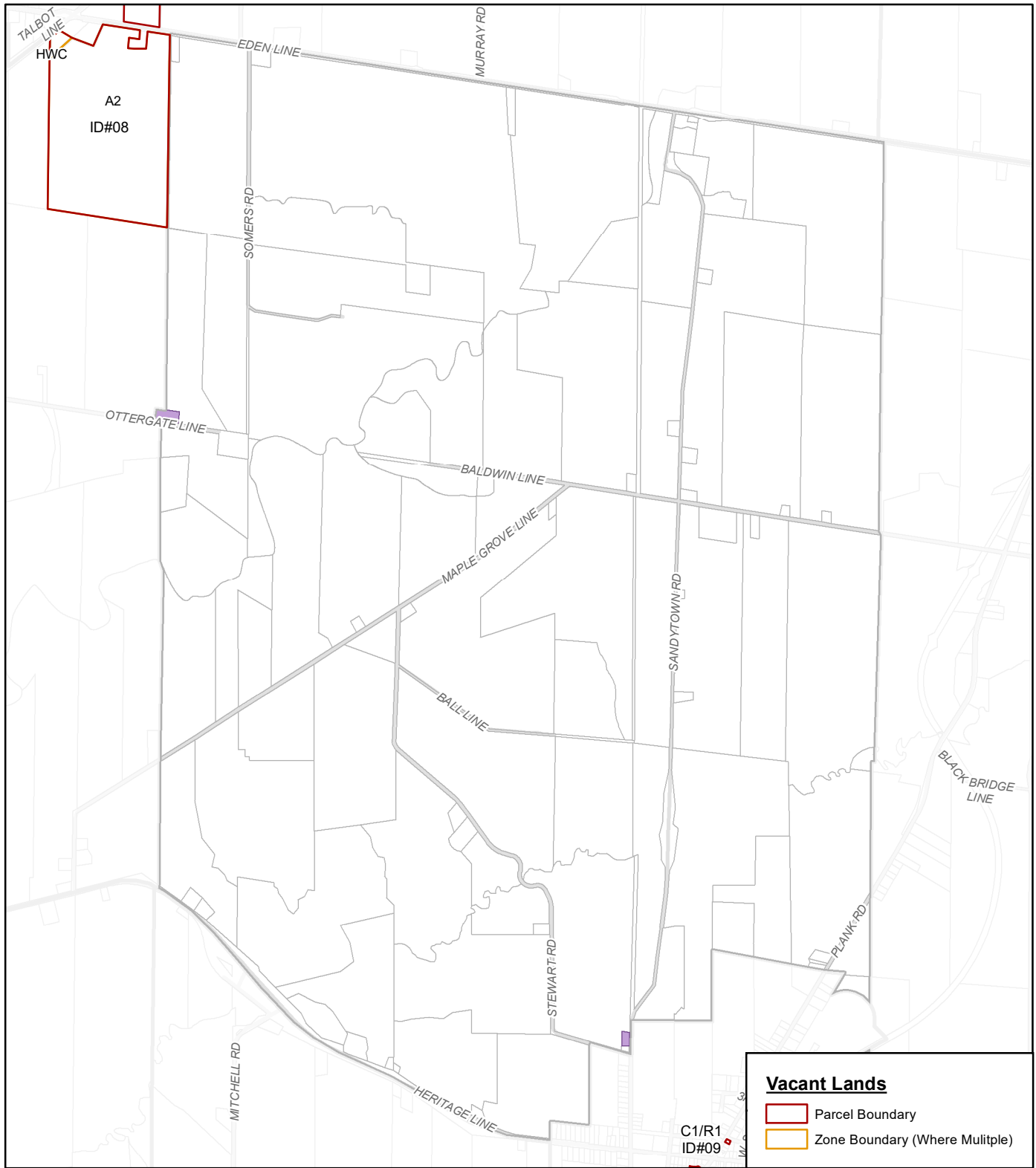


PROJECT			
MUNICIPALITY OF BAYHAM			
TITLE			
COMMERCIAL & INDUSTRIAL LANDS REVIEW			
	PROJECT NO. 3404		SCALE AS SHOWN
			REV. 0.0
	DESIGN		
	GIS	JG	2020-06-11
	CHECK		
REVIEW			
			No. 4

- LEGEND**
- Zone Categories**
- Commercial
 - Hamlet Commercial
 - Highway Commercial
 - Industrial
 - Rural Commercial

NOTE: The Municipality of Bayham Commercial and Industrial Lands Review has been prepared for reference and informational purposes only. Development requirements are determined through pre-consultation with Municipal planning staff and are subject to approvals by the appropriate approval authorities.





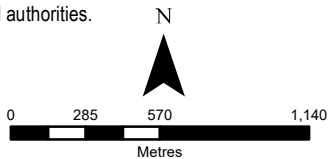
PROJECT			
MUNICIPALITY OF BAYHAM			
TITLE			
COMMERCIAL & INDUSTRIAL LANDS REVIEW			
	PROJECT NO. 3404		SCALE AS SHOWN
	DESIGN		REV. 0.0
	GIS	JG	2020-06-11
	No. 5		
	CHECK		
REVIEW			

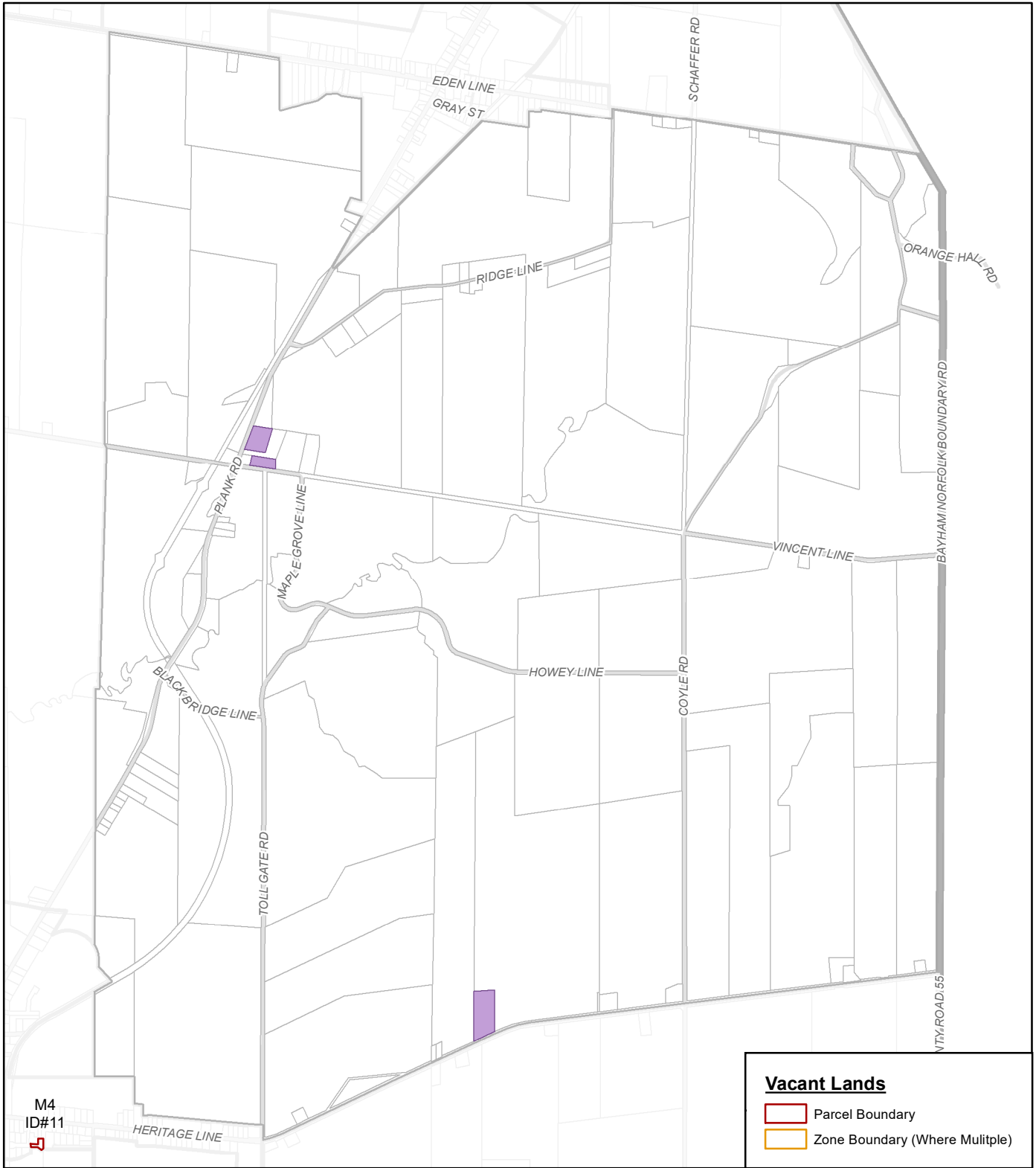
LEGEND

Zone Categories

- Commercial
- Hamlet Commercial
- Highway Commercial
- Industrial
- Rural Commercial

NOTE: The Municipality of Bayham Commercial and Industrial Lands Review has been prepared for reference and informational purposes only. Development requirements are determined through pre-consultation with Municipal planning staff and are subject to approvals by the appropriate approval authorities.

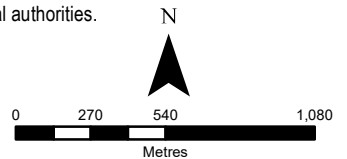


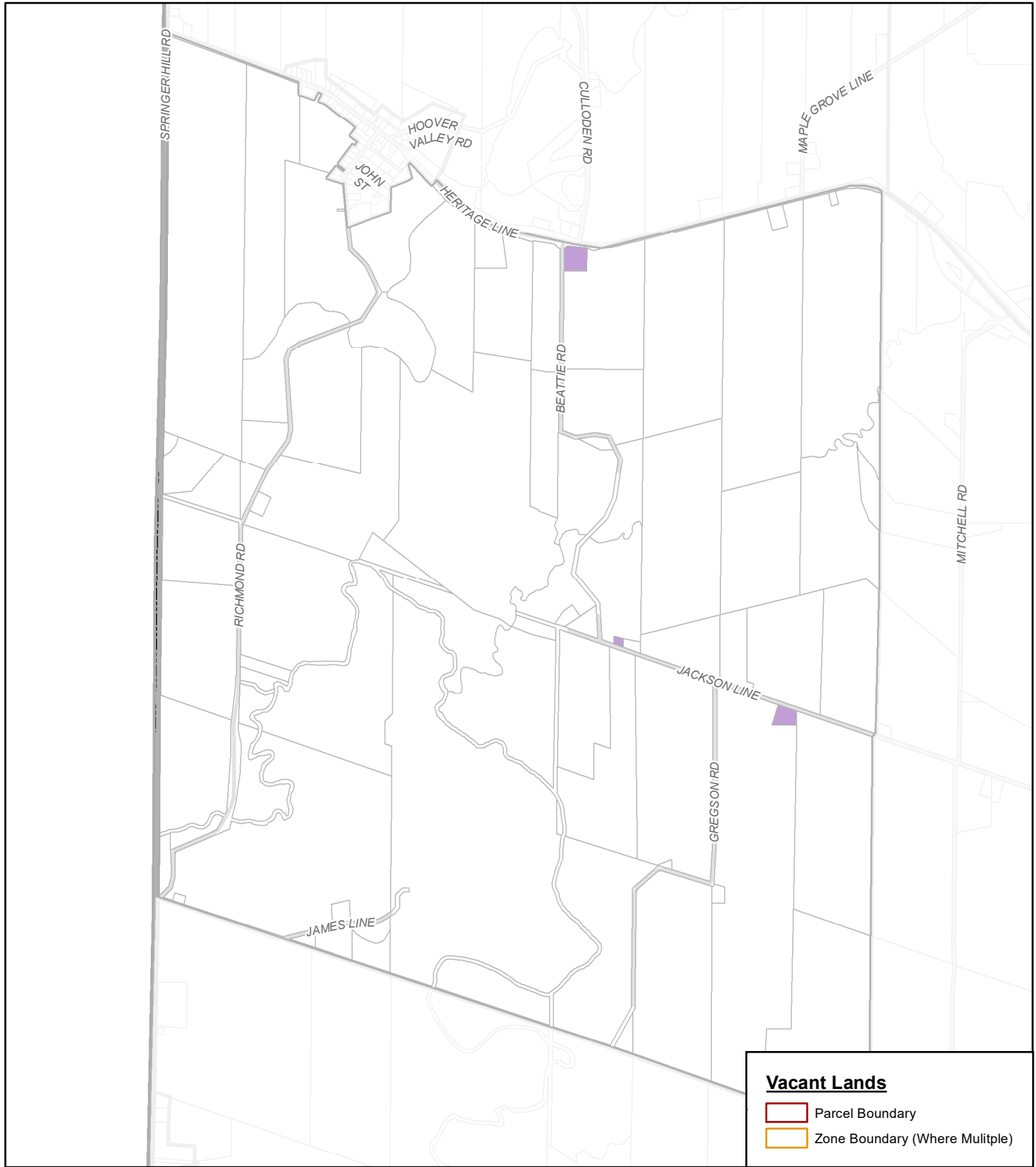


PROJECT				MUNICIPALITY OF BAYHAM				
TITLE				COMMERCIAL & INDUSTRIAL LANDS REVIEW				
		PROJECT NO. 3404		SCALE AS SHOWN		REV. 0.0		
		DESIGN				No. 6		
		GIS	JG	2020-06-11				
		CHECK						
REVIEW								

- LEGEND**
- Zone Categories**
- Commercial
 - Hamlet Commercial
 - Highway Commercial
 - Industrial
 - Rural Commercial

NOTE: The Municipality of Bayham Commercial and Industrial Lands Review has been prepared for reference and informational purposes only. Development requirements are determined through pre-consultation with Municipal planning staff and are subject to approvals by the appropriate approval authorities.

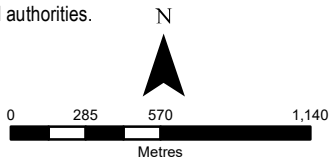


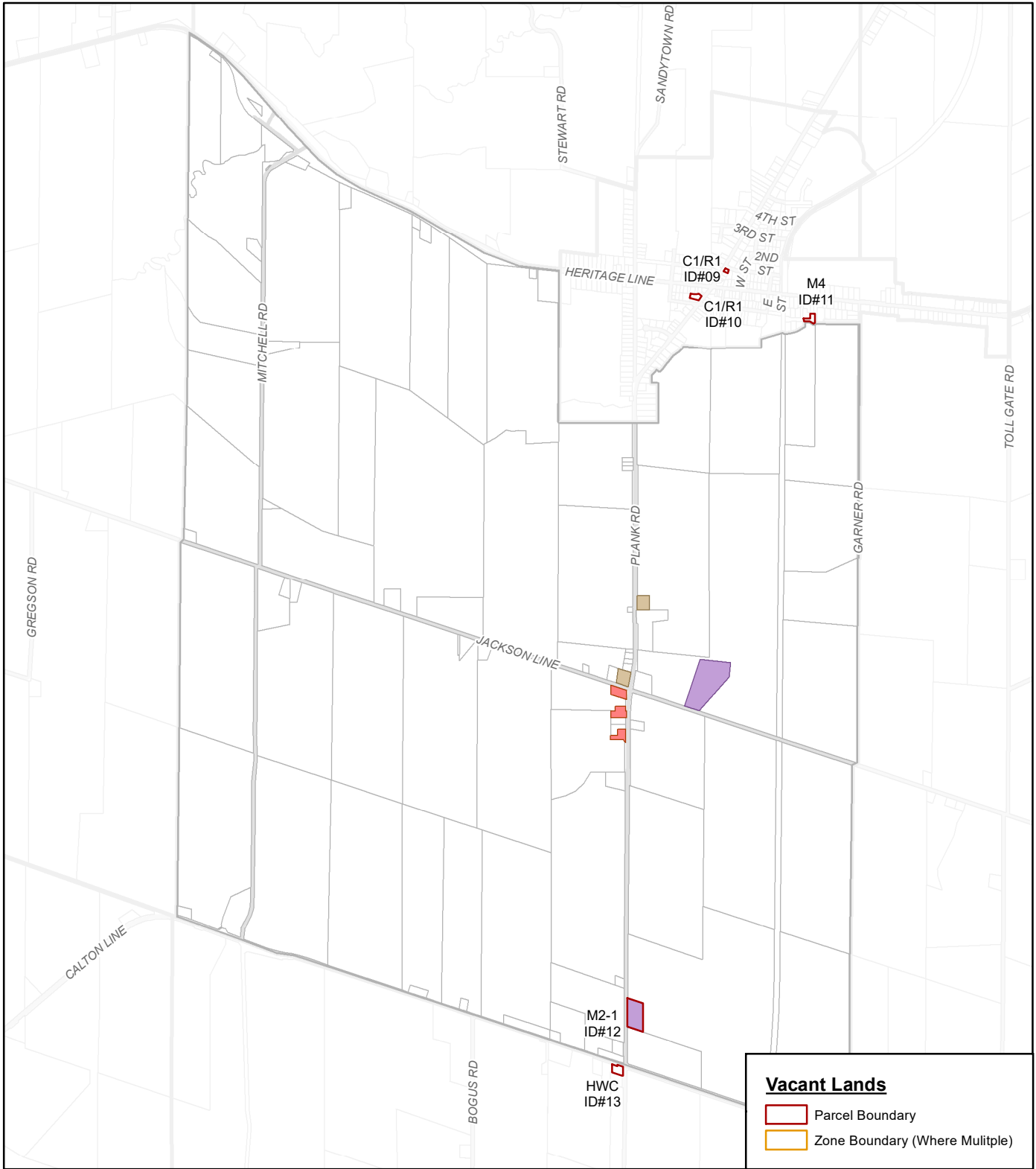


PROJECT		MUNICIPALITY OF BAYHAM	
TITLE		COMMERCIAL & INDUSTRIAL LANDS REVIEW	
	PROJECT NO. 3404		SCALE AS SHOWN
	DESIGN		REV. 0.0
	GIS	JG	2020-06-10
	CHECK		
	REVIEW		
No. 7			

- LEGEND**
- Zone Categories**
- Commercial
 - Hamlet Commercial
 - Highway Commercial
 - Industrial
 - Rural Commercial

NOTE: The Municipality of Bayham Commercial and Industrial Lands Review has been prepared for reference and informational purposes only. Development requirements are determined through pre-consultation with Municipal planning staff and are subject to approvals by the appropriate approval authorities.





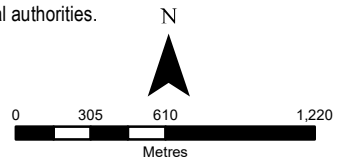
PROJECT		MUNICIPALITY OF BAYHAM	
TITLE		COMMERCIAL & INDUSTRIAL LANDS REVIEW	
	PROJECT NO.	3404	SCALE AS SHOWN
	DESIGN	JG	2020-06-11
	CHECK		
	REVIEW		
		REV. 0.0	
No. 8			

LEGEND

Zone Categories

	Commercial
	Hamlet Commercial
	Highway Commercial
	Industrial
	Rural Commercial

NOTE: The Municipality of Bayham Commercial and Industrial Lands Review has been prepared for reference and informational purposes only. Development requirements are determined through pre-consultation with Municipal planning staff and are subject to approvals by the appropriate approval authorities.

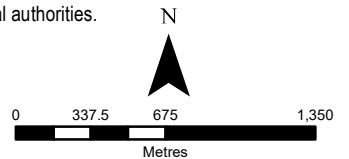


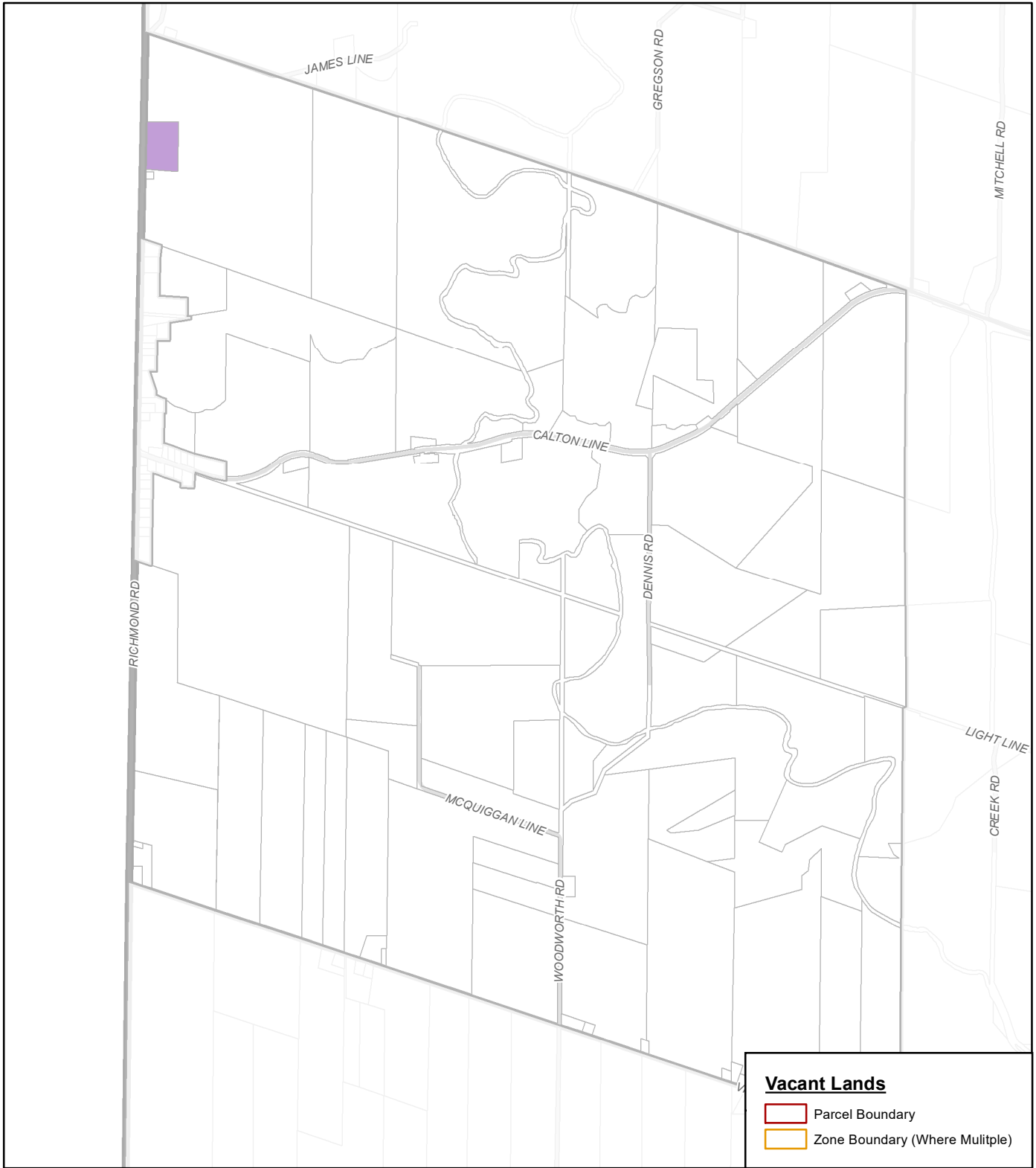



PROJECT			
MUNICIPALITY OF BAYHAM			
TITLE			
COMMERCIAL & INDUSTRIAL LANDS REVIEW			
[BI]	PROJECT NO. 3404		SCALE AS SHOWN
	DESIGN		REV. 0.0
	GIS	JG	2020-06-11
	No. 9		
	CHECK		
REVIEW			






- LEGEND**
- Zone Categories**
- Commercial
 - Hamlet Commercial
 - Highway Commercial
 - Industrial
 - Rural Commercial

NOTE: The Municipality of Bayham Commercial and Industrial Lands Review has been prepared for reference and informational purposes only. Development requirements are determined through pre-consultation with Municipal planning staff and are subject to approvals by the appropriate approval authorities.

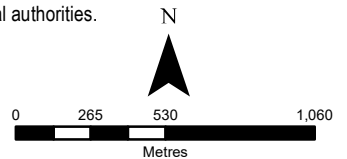




PROJECT			
MUNICIPALITY OF BAYHAM			
TITLE			
COMMERCIAL & INDUSTRIAL LANDS REVIEW			
	PROJECT NO. 3404		SCALE AS SHOWN
	DESIGN		REV. 0.0
	GIS	JG	2020-06-10
	No. 10		
	CHECK		
REVIEW			

- LEGEND**
- Zone Categories**
-  Commercial
 -  Hamlet Commercial
 -  Highway Commercial
 -  Industrial
 -  Rural Commercial

NOTE: The Municipality of Bayham Commercial and Industrial Lands Review has been prepared for reference and informational purposes only. Development requirements are determined through pre-consultation with Municipal planning staff and are subject to approvals by the appropriate approval authorities.

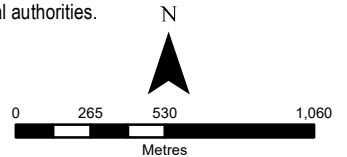




PROJECT		MUNICIPALITY OF BAYHAM	
TITLE		COMMERCIAL & INDUSTRIAL LANDS REVIEW	
	PROJECT NO.	3404	SCALE AS SHOWN
	DESIGN	JG	2020-06-11
	CHECK		
	REVIEW		
		No. 11	

- LEGEND**
- Zone Categories**
- Commercial
 - Hamlet Commercial
 - Highway Commercial
 - Industrial
 - Rural Commercial

NOTE: The Municipality of Bayham Commercial and Industrial Lands Review has been prepared for reference and informational purposes only. Development requirements are determined through pre-consultation with Municipal planning staff and are subject to approvals by the appropriate approval authorities.

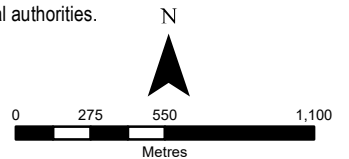


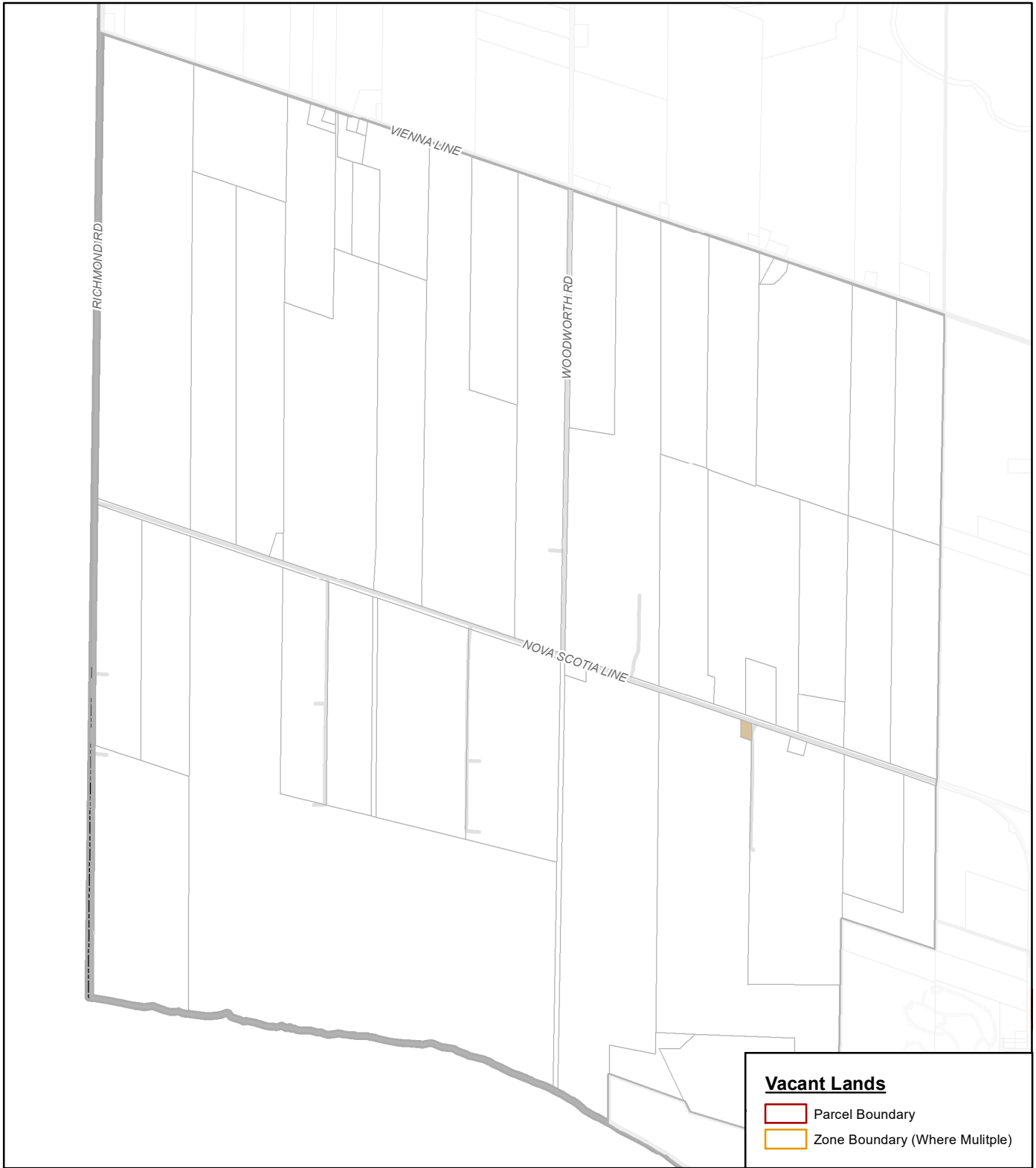


PROJECT			
MUNICIPALITY OF BAYHAM			
TITLE			
COMMERCIAL & INDUSTRIAL LANDS REVIEW			
	PROJECT NO. 3404		SCALE AS SHOWN
	DESIGN		REV. 0.0
	GIS	JG	2020-06-10
	No. 12		
	CHECK		
REVIEW			

- LEGEND**
- Zone Categories**
- Commercial
 - Hamlet Commercial
 - Highway Commercial
 - Industrial
 - Rural Commercial

NOTE: The Municipality of Bayham Commercial and Industrial Lands Review has been prepared for reference and informational purposes only. Development requirements are determined through pre-consultation with Municipal planning staff and are subject to approvals by the appropriate approval authorities.

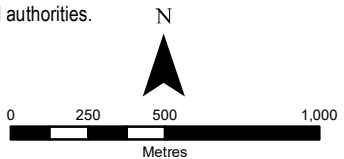


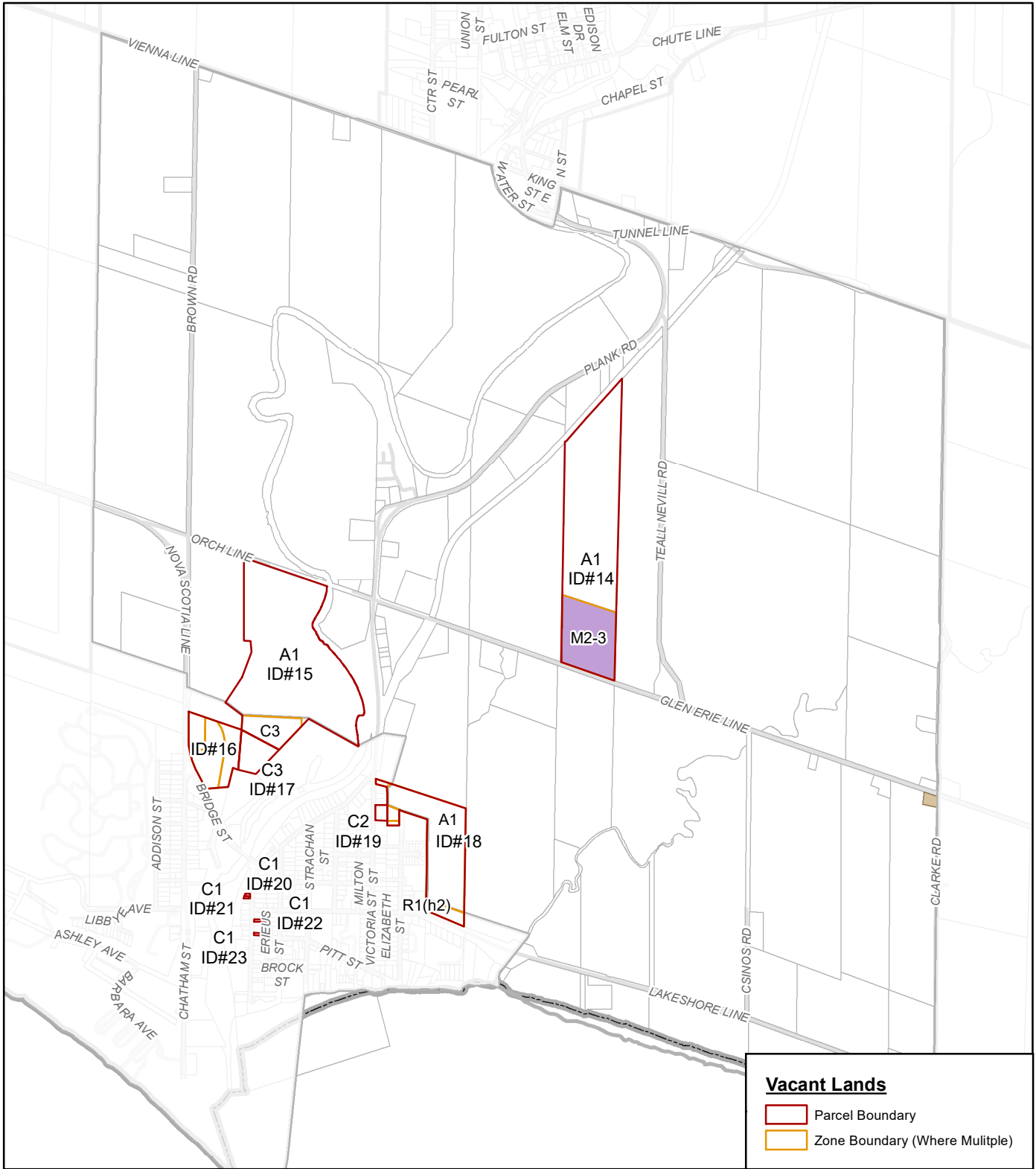


PROJECT			
MUNICIPALITY OF BAYHAM			
TITLE			
COMMERCIAL & INDUSTRIAL LANDS REVIEW			
	PROJECT NO. 3404		SCALE AS SHOWN
	DESIGN		REV. 0.0
	GIS	JG	2020-06-10
	No. 13		
	CHECK		
REVIEW			

- LEGEND**
- Zone Categories**
- Commercial
 - Hamlet Commercial
 - Highway Commercial
 - Industrial
 - Rural Commercial

NOTE: The Municipality of Bayham Commercial and Industrial Lands Review has been prepared for reference and informational purposes only. Development requirements are determined through pre-consultation with Municipal planning staff and are subject to approvals by the appropriate approval authorities.





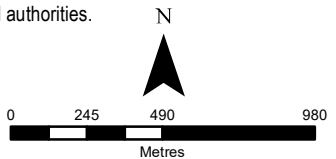
PROJECT		MUNICIPALITY OF BAYHAM	
TITLE		COMMERCIAL & INDUSTRIAL LANDS REVIEW	
	PROJECT NO.	3404	SCALE AS SHOWN
	DESIGN		REV. 0.0
	GIS	JG 2020-06-11	No. 14
	CHECK		
REVIEW			

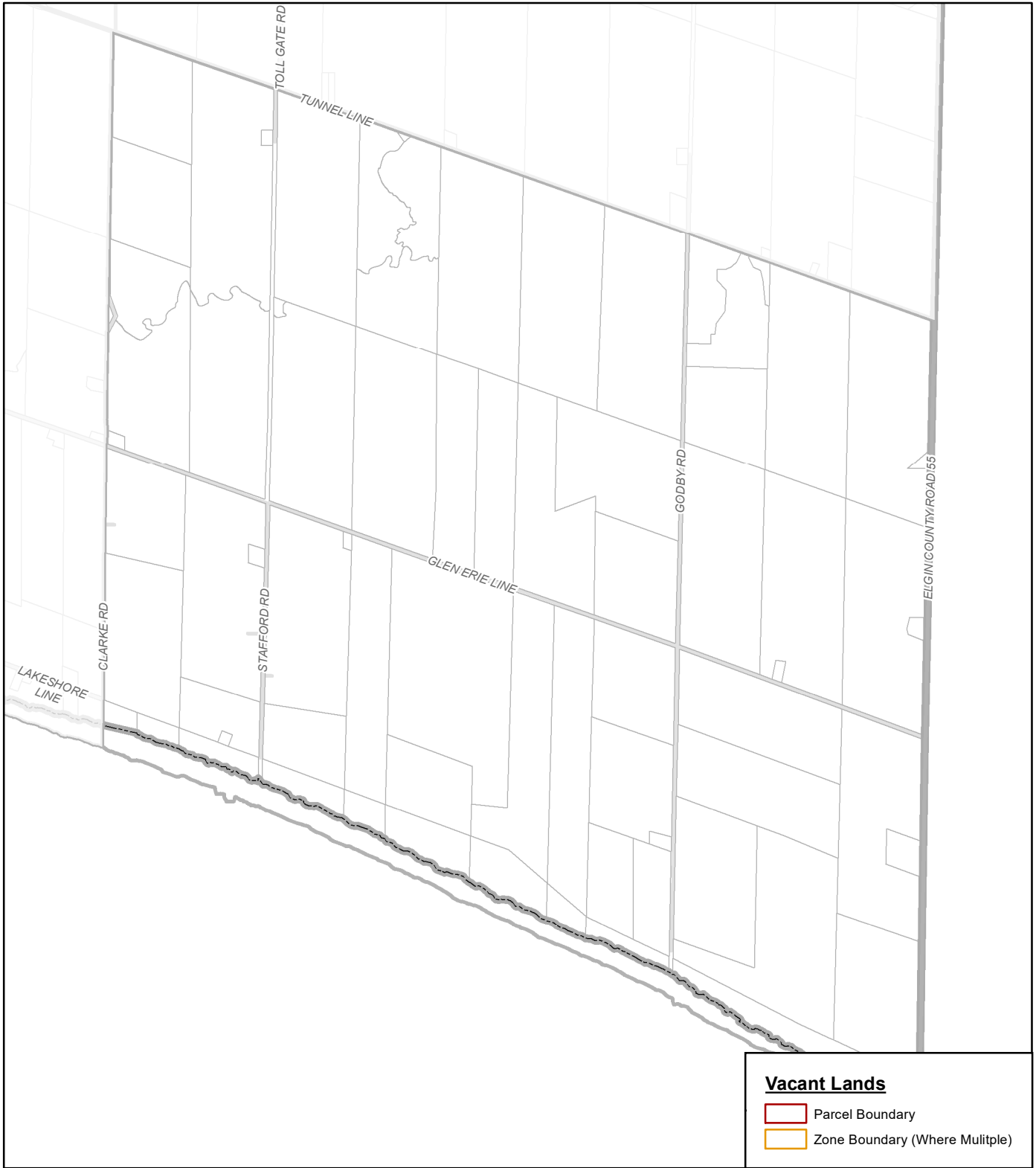
LEGEND

Zone Categories

- Commercial
- Hamlet Commercial
- Highway Commercial
- Industrial
- Rural Commercial

NOTE: The Municipality of Bayham Commercial and Industrial Lands Review has been prepared for reference and informational purposes only. Development requirements are determined through pre-consultation with Municipal planning staff and are subject to approvals by the appropriate approval authorities.





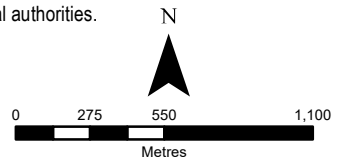
PROJECT			
MUNICIPALITY OF BAYHAM			
TITLE			
COMMERCIAL & INDUSTRIAL LANDS REVIEW			
	PROJECT NO. 3404		SCALE AS SHOWN
	DESIGN		REV. 0.0
	GIS	JG	2020-06-10
	CHECK		
	REVIEW		
No. 15			

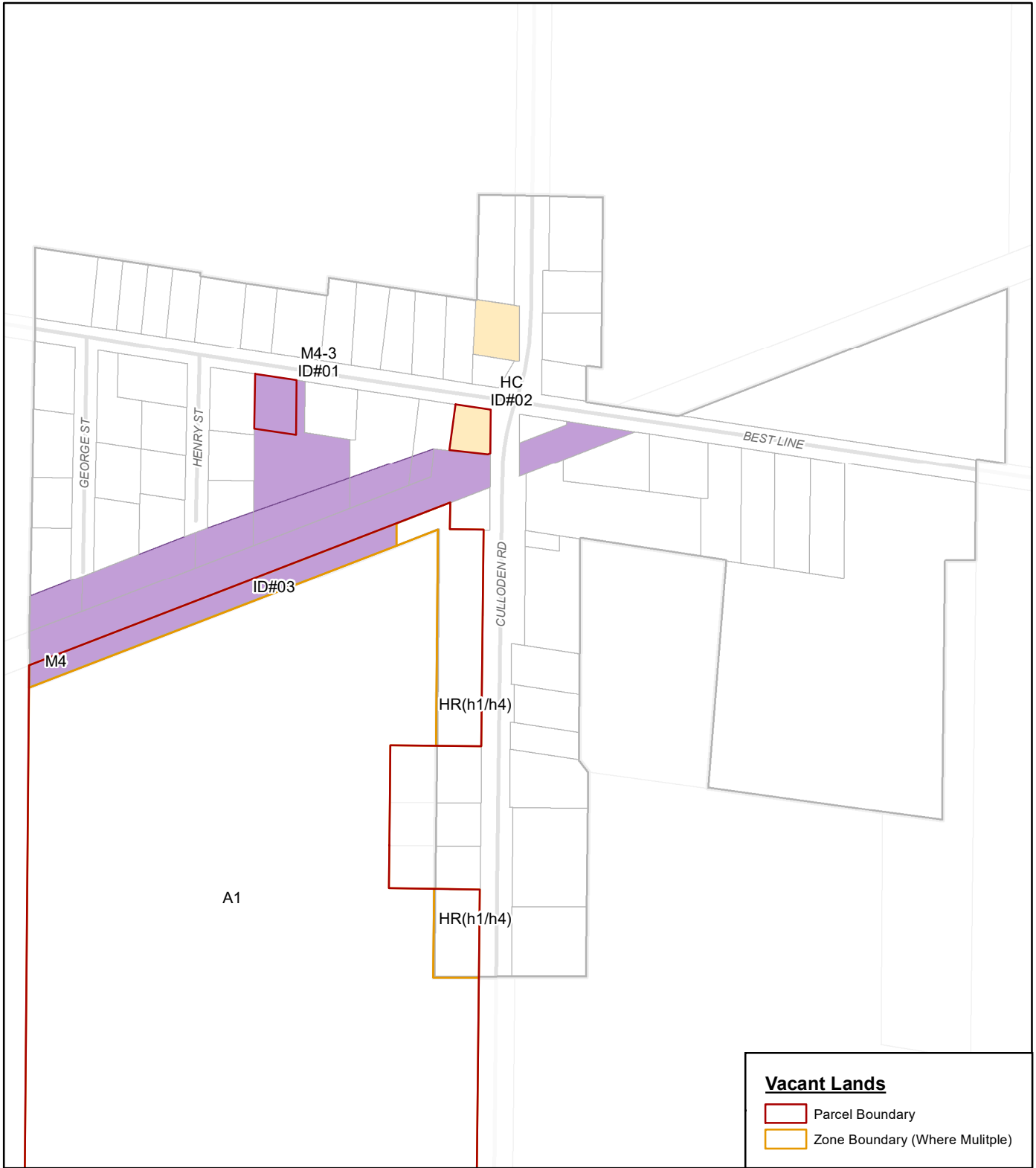
LEGEND

Zone Categories

- Commercial
- Hamlet Commercial
- Highway Commercial
- Industrial
- Rural Commercial

NOTE: The Municipality of Bayham Commercial and Industrial Lands Review has been prepared for reference and informational purposes only. Development requirements are determined through pre-consultation with Municipal planning staff and are subject to approvals by the appropriate approval authorities.

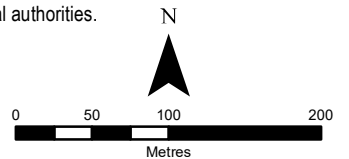


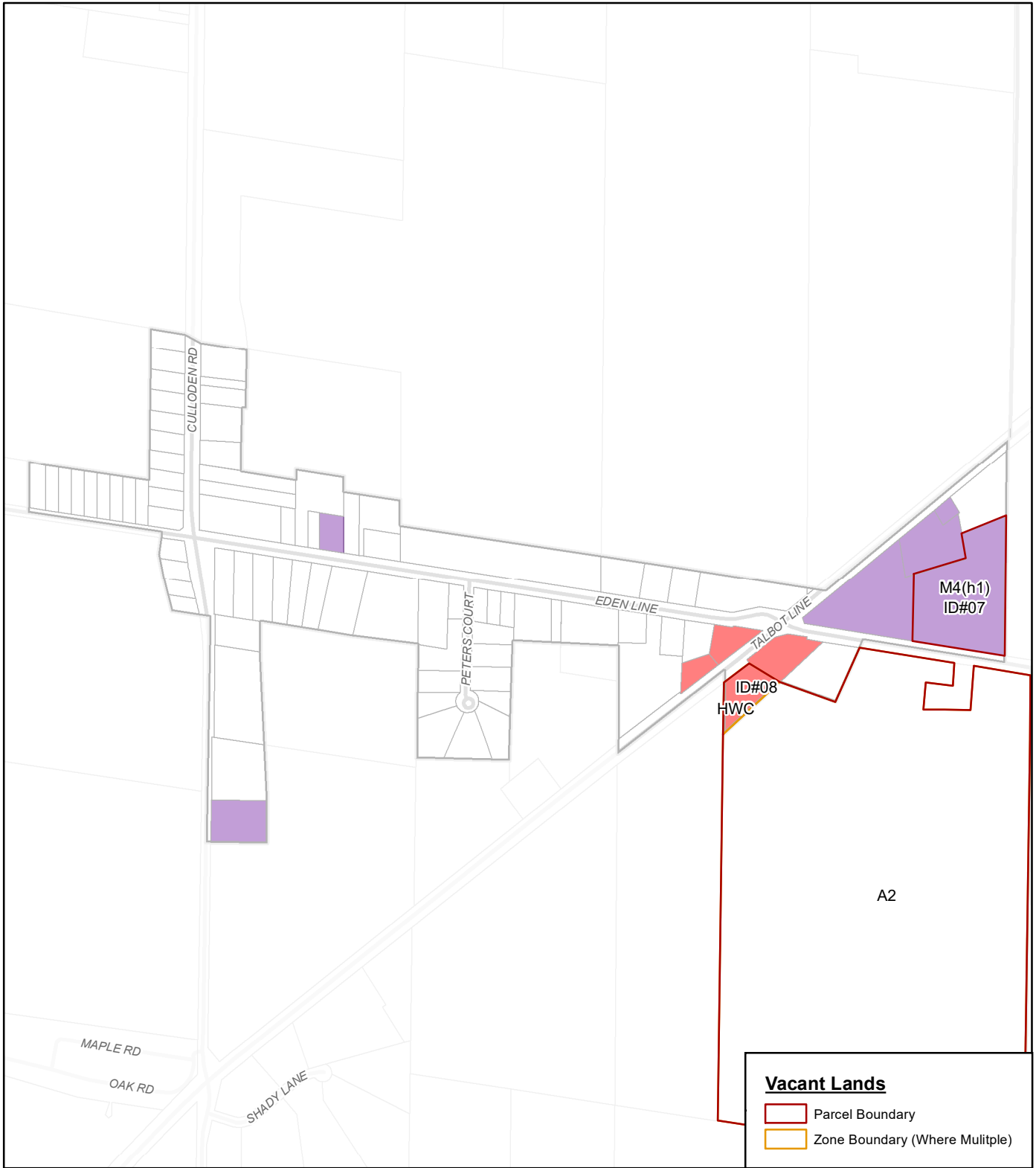


PROJECT			
MUNICIPALITY OF BAYHAM			
TITLE			
COMMERCIAL & INDUSTRIAL LANDS REVIEW			
	PROJECT NO. 3404		SCALE AS SHOWN
	DESIGN		REV. 0.0
	GIS	JG	2020-06-10
	CHECK		
	REVIEW		
CORINTH			

- LEGEND**
- Zone Categories**
- Commercial
 - Hamlet Commercial
 - Highway Commercial
 - Industrial
 - Rural Commercial

NOTE: The Municipality of Bayham Commercial and Industrial Lands Review has been prepared for reference and informational purposes only. Development requirements are determined through pre-consultation with Municipal planning staff and are subject to approvals by the appropriate approval authorities.

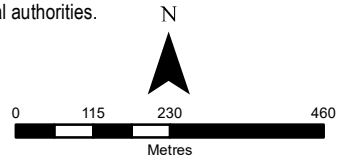




PROJECT		MUNICIPALITY OF BAYHAM	
TITLE		COMMERCIAL & INDUSTRIAL LANDS REVIEW	
	PROJECT NO.	3404	SCALE AS SHOWN
	DESIGN	JG	2020-06-10
	CHECK		
	REVIEW		
		REV. 0.0	
		NORTH HALL	

- LEGEND**
- Zone Categories**
- Commercial
 - Hamlet Commercial
 - Highway Commercial
 - Industrial
 - Rural Commercial

NOTE: The Municipality of Bayham Commercial and Industrial Lands Review has been prepared for reference and informational purposes only. Development requirements are determined through pre-consultation with Municipal planning staff and are subject to approvals by the appropriate approval authorities.





Vacant Lands

- Parcel Boundary
- Zone Boundary (Where Multiple)

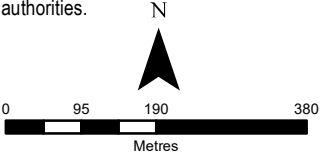
PROJECT			
MUNICIPALITY OF BAYHAM			
TITLE			
COMMERCIAL & INDUSTRIAL LANDS REVIEW			
	PROJECT NO. 3404		SCALE AS SHOWN
	DESIGN		REV. 0.0
	GIS	JG	2020-06-10
	CHECK		
	REVIEW		
			EDEN

LEGEND

Zone Categories

- + Commercial
- + Hamlet Commercial
- + Highway Commercial
- + Industrial
- + Rural Commercial

NOTE: The Municipality of Bayham Commercial and Industrial Lands Review has been prepared for reference and informational purposes only. Development requirements are determined through pre-consultation with Municipal planning staff and are subject to approvals by the appropriate approval authorities.





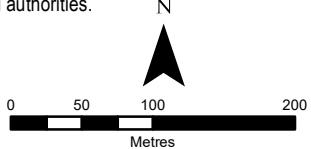
PROJECT				MUNICIPALITY OF BAYHAM			
TITLE				COMMERCIAL & INDUSTRIAL LANDS REVIEW			
		PROJECT NO. 3404		SCALE AS SHOWN		REV. 0.0	
		DESIGN				RICHMOND	
		GIS	JG	2020-06-10			
		CHECK					
		REVIEW					

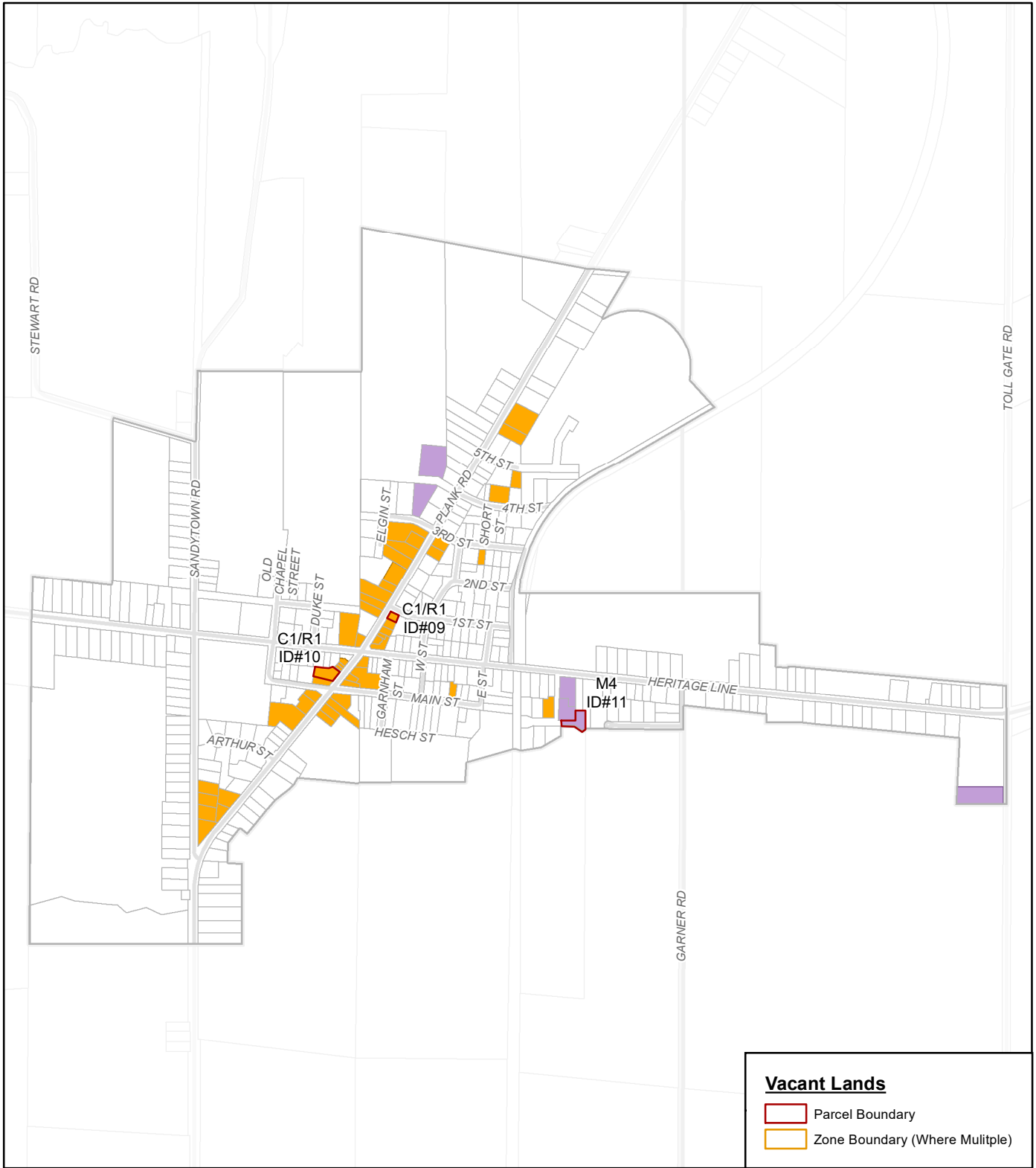
LEGEND

Zone Categories

- Commercial
- Hamlet Commercial
- Highway Commercial
- Industrial
- Rural Commercial

NOTE: The Municipality of Bayham Commercial and Industrial Lands Review has been prepared for reference and informational purposes only. Development requirements are determined through pre-consultation with Municipal planning staff and are subject to approvals by the appropriate approval authorities.

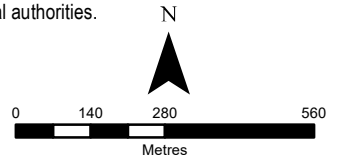


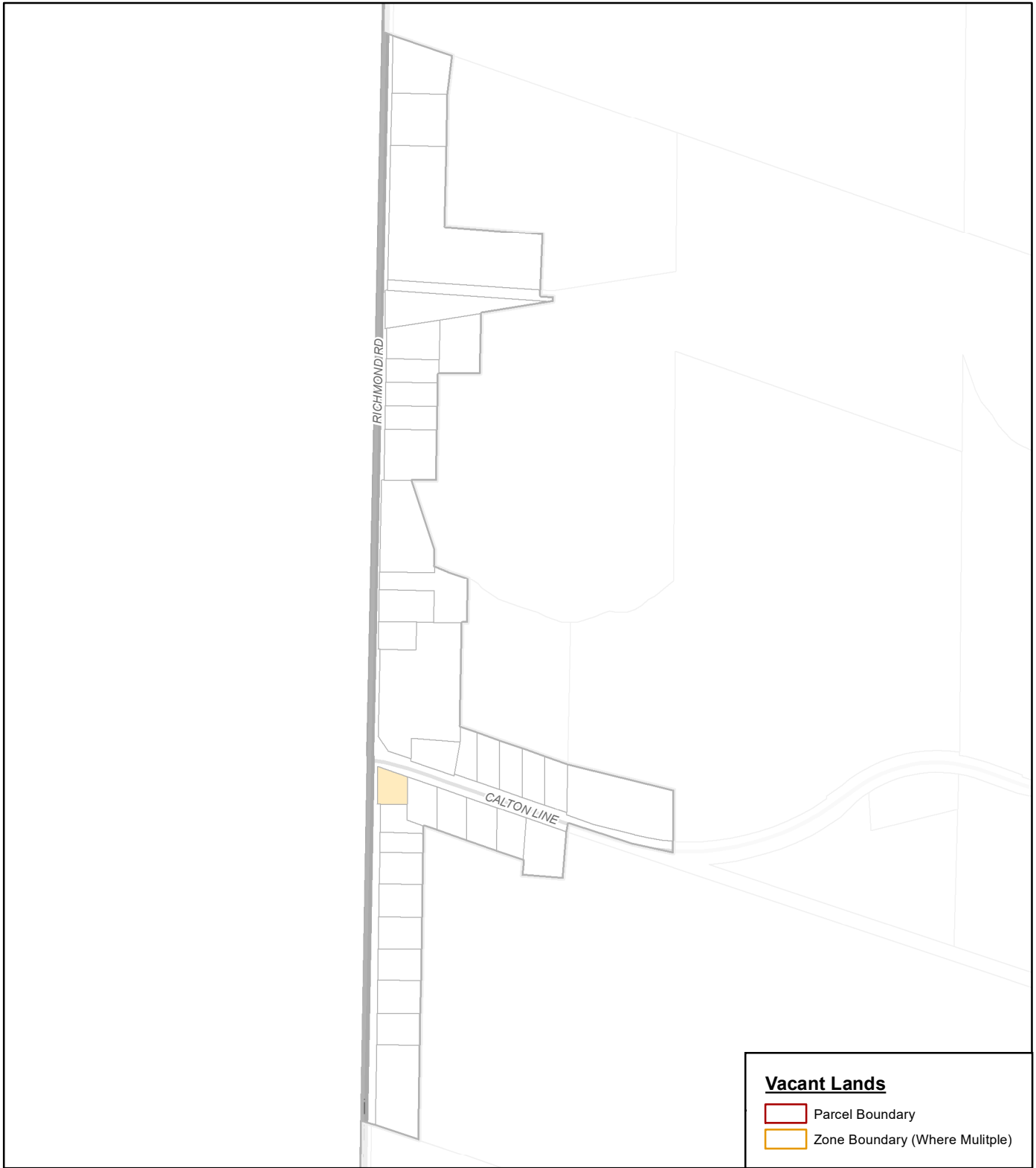


PROJECT				MUNICIPALITY OF BAYHAM			
TITLE				COMMERCIAL & INDUSTRIAL LANDS REVIEW			
	PROJECT NO. 3404		SCALE AS SHOWN		REV. 0.0		
	DESIGN				STRAFFORDVILLE		
	GIS	JG	2020-06-11				
	CHECK						
	REVIEW						

- LEGEND**
- Zone Categories**
- Commercial
 - Hamlet Commercial
 - Highway Commercial
 - Industrial
 - Rural Commercial

NOTE: The Municipality of Bayham Commercial and Industrial Lands Review has been prepared for reference and informational purposes only. Development requirements are determined through pre-consultation with Municipal planning staff and are subject to approvals by the appropriate approval authorities.

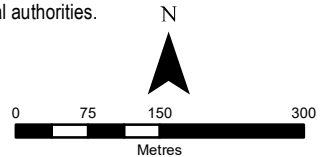


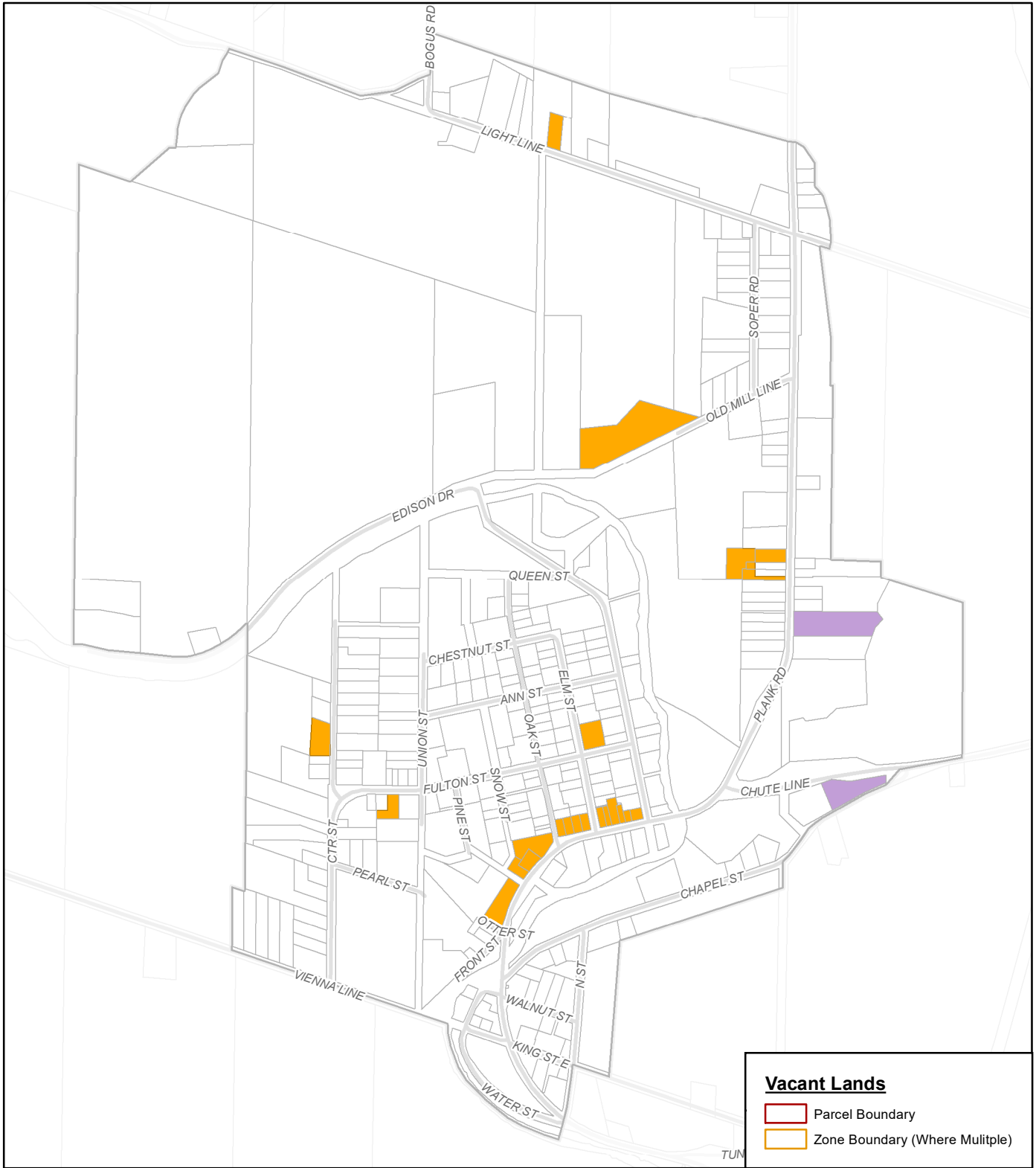


PROJECT			
MUNICIPALITY OF BAYHAM			
TITLE			
COMMERCIAL & INDUSTRIAL LANDS REVIEW			
	PROJECT NO. 3404		SCALE AS SHOWN
	DESIGN		REV. 0.0
	GIS	JG	2020-06-10
	CALTON		
REVIEW			

- LEGEND**
- Zone Categories**
- Commercial
 - Hamlet Commercial
 - Highway Commercial
 - Industrial
 - Rural Commercial

NOTE: The Municipality of Bayham Commercial and Industrial Lands Review has been prepared for reference and informational purposes only. Development requirements are determined through pre-consultation with Municipal planning staff and are subject to approvals by the appropriate approval authorities.





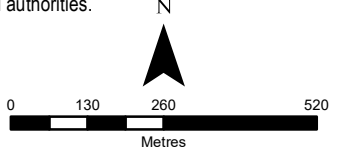
PROJECT			
MUNICIPALITY OF BAYHAM			
TITLE			
COMMERCIAL & INDUSTRIAL LANDS REVIEW			
	PROJECT NO. 3404		SCALE AS SHOWN
	DESIGN		REV. 0.0
	GIS	JG	2020-06-10
	CHECK		
	REVIEW		
VIENNA			

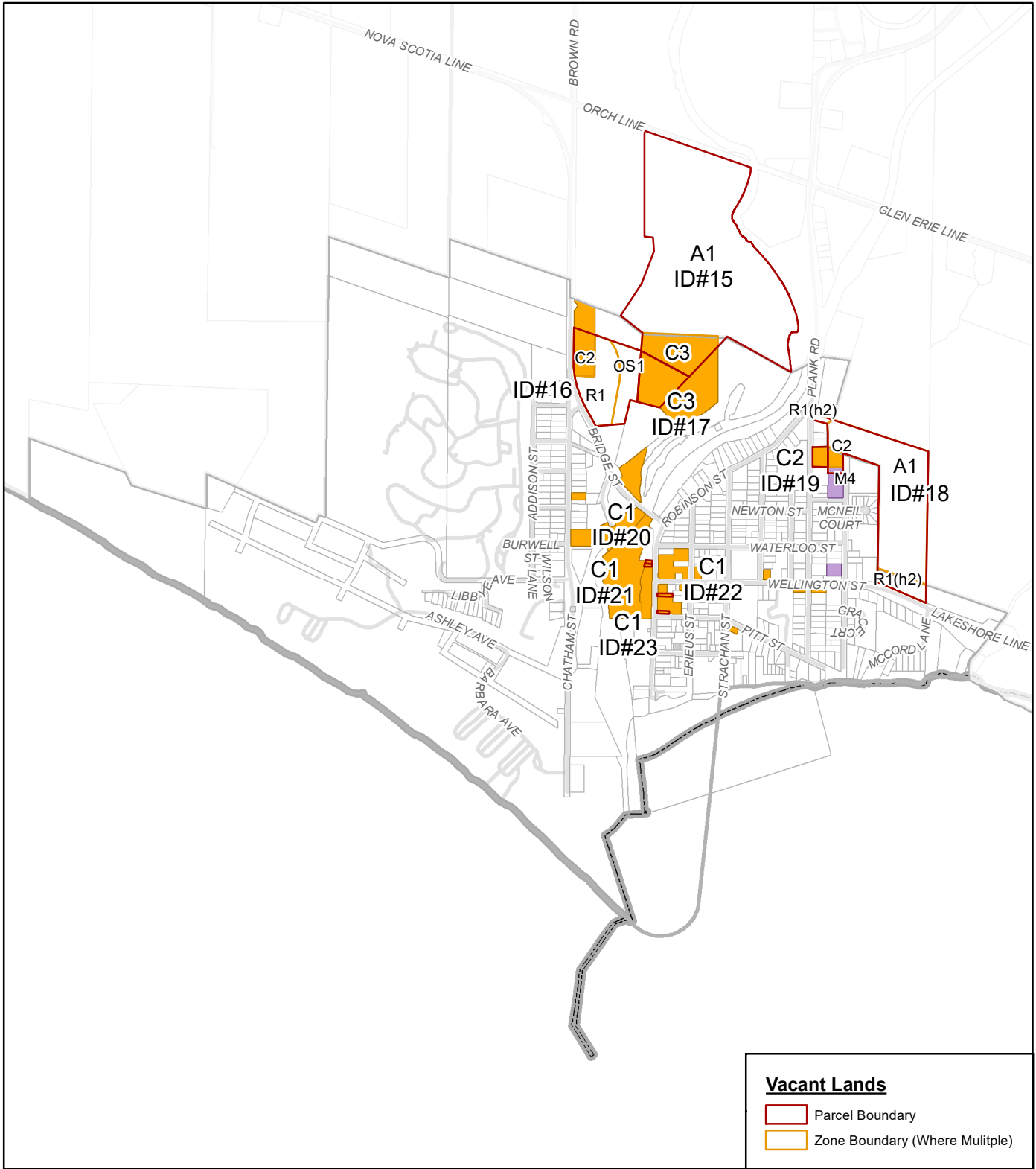
LEGEND

Zone Categories

- Commercial
- Hamlet Commercial
- Highway Commercial
- Industrial
- Rural Commercial

NOTE: The Municipality of Bayham Commercial and Industrial Lands Review has been prepared for reference and informational purposes only. Development requirements are determined through pre-consultation with Municipal planning staff and are subject to approvals by the appropriate approval authorities.





PROJECT			
MUNICIPALITY OF BAYHAM			
TITLE			
COMMERCIAL & INDUSTRIAL LANDS REVIEW			
	PROJECT NO. 3404		SCALE AS SHOWN
	DESIGN		REV. 0.0
	GIS	JG	2020-06-11
	CHECK		
	REVIEW		
PORT BURWELL			

LEGEND

Zone Categories

	Commercial
	Hamlet Commercial
	Highway Commercial
	Industrial
	Rural Commercial

NOTE: The Municipality of Bayham Commercial and Industrial Lands Review has been prepared for reference and informational purposes only. Development requirements are determined through pre-consultation with Municipal planning staff and are subject to approvals by the appropriate approval authorities.

